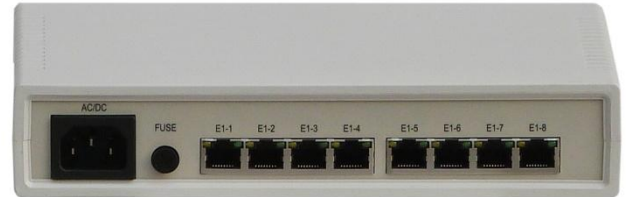




## ◆ 8E1+4\*10/100 Ethernet TDMOIP protocol converter(mini type)

### ➤ Features

- Providing 8E1 interface;
- Providing 4 electrical Ethernet interface and 1 optical Ethernet , any one port can be used uplink interface ,others can be used downlink;
- Supporting E1 package QOS assurance;
- The equipment having the high transmission efficiency, and the transmission delay can be adjusted;
- Supporting point to point、 point to multi-points transmission;
- Supporting E1 framed、 unframed setting;
- Supporting E1 loss alarm indication;
- The equipment adopts UDP encapsulation, supporting different types of Ethernet transmission channels;
- supporting Ethernet PING package function;
- Ethernet supporting 10/100M self-adaptive, full/half duplex self-adaptive function;
- Supporting different clock connection, the system will automatically adjust and adaptive clock;
- Supporting two power supply mode: 220VAC or 48VDC.



### ➤ Introduction

TDM over IP Equipment will transmit E1 signal through IP channel, TDM over IP Equipment can realize TDM service access by using carrier's or companies' existing wireless or wired Ethernet structure. TDM over IP Equipment adopt transparent transmission for TDM signal, which can assure the seamless connection with the equipment that has any E1 interface, such as PBX, mobile base station, different types of signaling equipment.

EthMux-8E1-4ETH TDM over IP Equipment realizes clock synchronization of TDM signal and delay automatically adjustment. IP encapsulation adopt UDP format, it suitable all kinds of IP channel application, supports inner transmission in Ethernet subnet and route change transmission across network. TDM data in the encapsulation supports frame、 non-frame format setting of each single E1, supports E1 point to point、 point to multi-points setting and supports the setting of local E1 connected with remote equipment's E1.

### ➤ Specification

#### Ethernet Interface

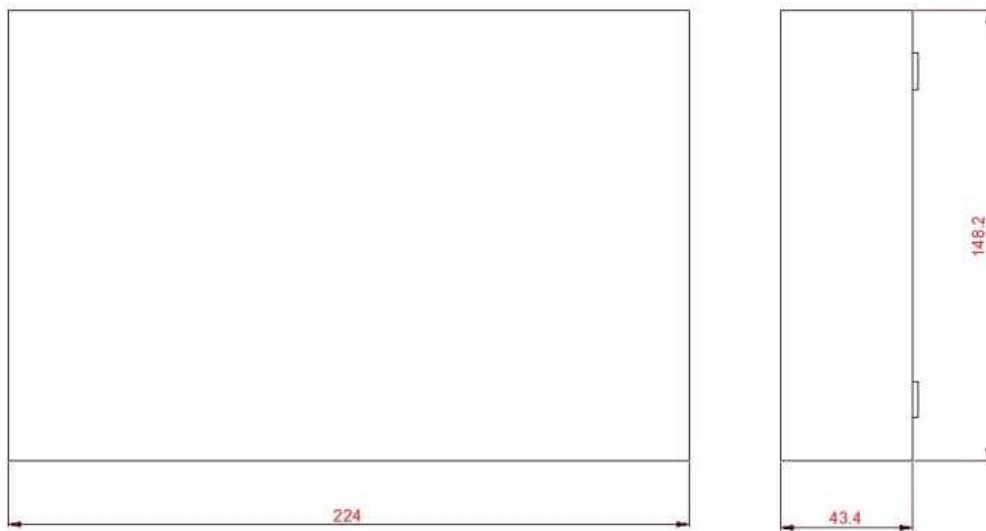
Rate	10M/100M, full/half duplex self adaptive
Protocol	support IEEE 802.3, IEEE 802.1Q (VLAN)
MAC address table	1024 MAC addresses

#### E1 interface

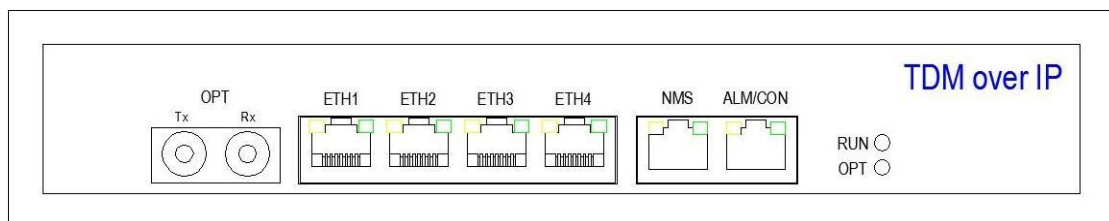
Standard	E1 interface compatible with G.703 standard
Coding	HDB3
Rate	2.048Mbit/s±50ppm

Impedance	75Ω (unbalance), 120Ω (balance)
<b>Physical</b>	
Dimension	224mm(W)*148.2mm(D)*43.4mm(H)
Weight	1kg
Power consumption	5W
Power supply	DC:36V~72V AC:180V-260V
Operating temperature	0°C~50°C
Storage temperature	-40°C~70°C
Humidity	≤95%, free from condensing

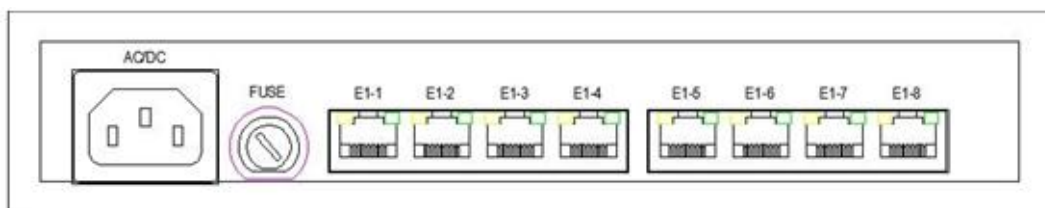
## ➤ Dimension



224(W)\*148.2(D)\*43.4(H)



Front panel

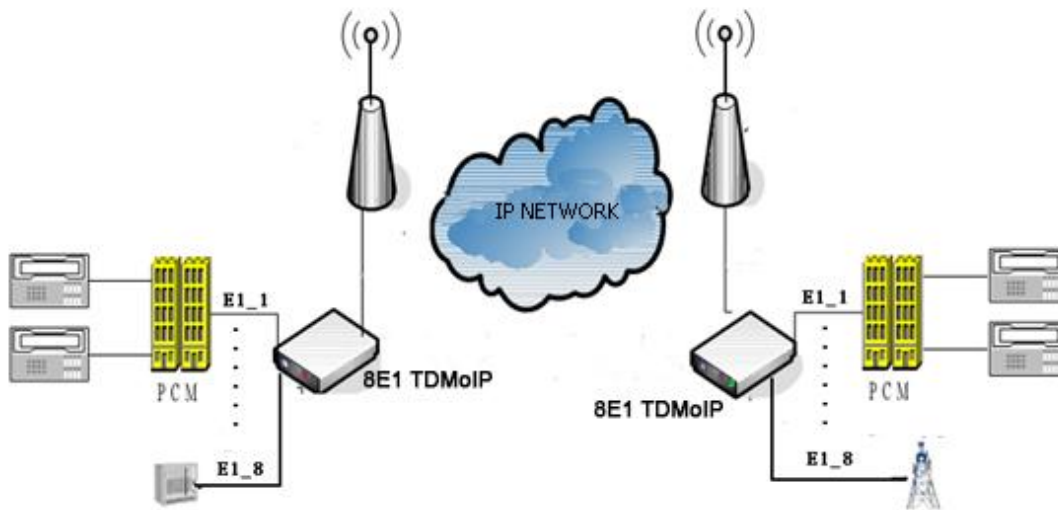


Back panel

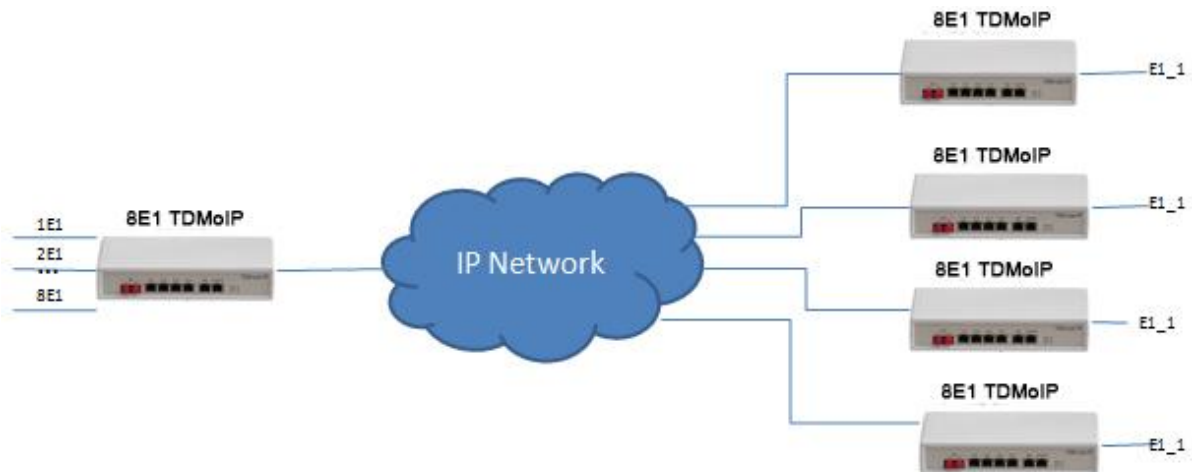
## ➤ Ordering Information

Model NO.	Description
EthMux-4E1-4ETH	4E1(75ohm/120ohm),4*10/100BASE-Tx , AC220V/DC48V
EthMux-8E1-4ETH	8E1(75ohm/120ohm),4*10/100BASE-Tx, AC220V/DC48V

## ➤ Application



**Point to point application**



**Point to multipoint application**