



◆ 10/100/1000M PoE Extender 15.4W

➤ Features

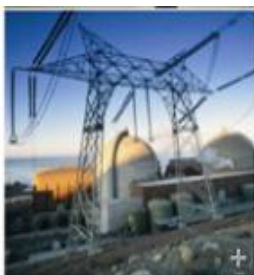
- Supply power to IP network cameras through Cat5e cables (PoE)
- Compatible with IEEE 802.3af PSE devices
- Support 10/100/1000M data transmission through RJ45 port
- Auto-negotiation and auto-MDIX fast Ethernet RJ45 port
- Both mid-span (4/5+, 7/8-) and end-span (1/2+, 3/6-)
- IEEE 802.3af; IEEE 802.3i; IEEE 802.3u; IEEE 802.3x Flow Control; IEEE 802.1af DTE Power via MDI
- 100Base-TX : Cat5UTP(≤100 meters)
- Store-And-Forward architecture
- 2x RJ45 PoE ports; maximum 15.4W for single PoE port
- Front-end receiving and Back-end supply power



➤ Introduction

PX101G is a simple device which can extend the 100m standard data transmission to 200m through CAT5e/6 UTP cable, by just plug and play but no additional power supply or set up required. It offers you great flexibility to extend the distance of PoE network to triple, quadruple further in length or more. And this device supports forwards both Ethernet data and PoE power to remote devices

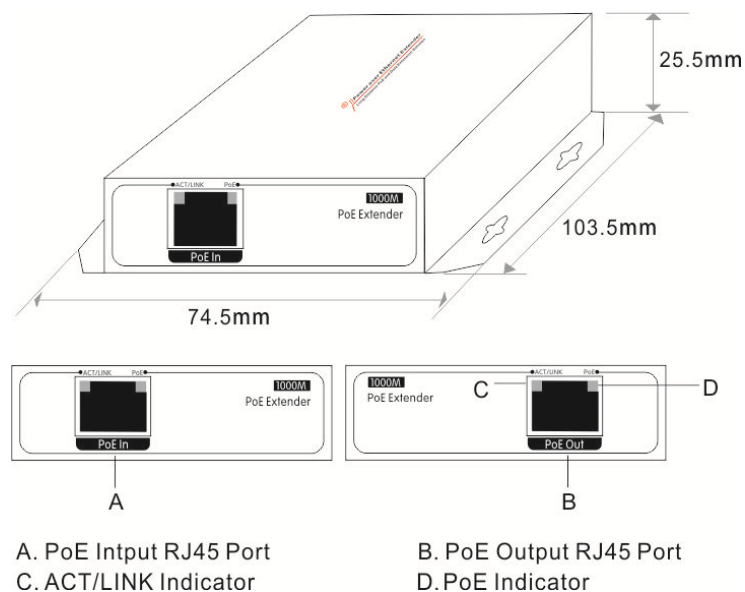
For the cost saving and power management purpose, this device can be widely used for City intelligent traffic monitoring system (ITS), safe city, and wireless city; large industrial factory & enterprise security surveillance system; Highway surveillance system, electronic road surveillance, snapshot system; Remote multimedia teaching & campus surveillance, video conferencing systems; Building intercom, wireless communications, video surveillance.



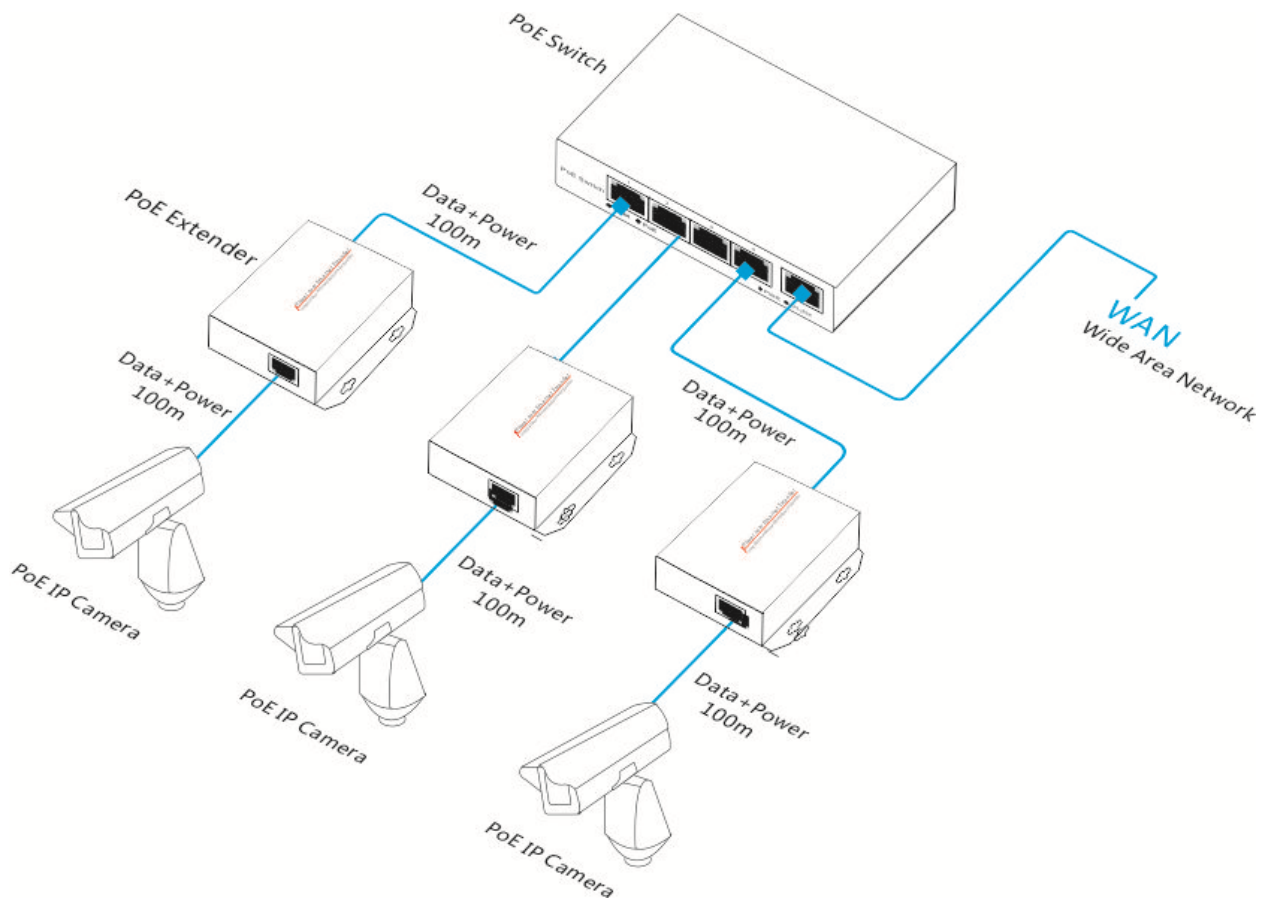
➤ Specification

Description	10/100/1000M PoE Extender 15.4W extends the data transmission from 100m to 200m
Protocols and Standards	IEEE 802.3i 10BASET IEEE 802.3u 100BASET IEEE 802.3x Flow Control IEEE 802.1af DTE Power via MDI IEEE 802.3af
Network Medium	Cat5 or more UTP(≤100 meter)
Backplane Bandwidth	8Gbps
Fundamental Function	>100 °C
Forwarding Way	Store-And-Forward architecture
MAC Address Table Size	1K
Port	1x RJ45 PoE input port; 1x RJ45 PoE output port
PoE Features	PoE standard: IEEE802.3af PoE port power: 15.4W Default: end-span(1/2+, 3/6-) . Optional:Mid-span(4/5+, 7/8-)
LED Indicator Status	ACT/LINK: Network status , PoE: PoE working status
Dimensions	LxWxH: 74.5x103.5x25.5mm
Weight	0.15kg
Working Environment	Operating Temperature: 0 °~ 55 °C Storage Temperature: -20 °~ 75 °C Working Humidity: 10% ~90%, non-condensing Storage Humidity: 10% ~95%, non-condensing
Radiation	POE: IEEE802.3af POE Port Power: 15.4W(IEEE802.3af)
Warranty	1 year warranty

➤ Dimension



➤ Application



➤ Ordering Information

Model NO.	Description
PX101G	10/100/1000M PoE Extender;1x RJ45 input port; 1x RJ45 PoE output port;15.4W(IEEE802.3af); extends the data transmission from 100m to 200m
PX101G-at	10/100/1000M PoE Extender;1x RJ45 input port; 1x RJ45 PoE output port;25.5W(IEEE802.3at); extends the data transmission from 100m to 200m

➤ Packing List

- 10/100/1000M PoE Extender;1x RJ45 input port; 1x RJ45 PoE output port;15.4W
- User manual × 1
- Power Cable
- Warranty card × 1