



### ◆ 4-Port Gigabit PoE Injector with 4 PoE Ports 15.4W

#### ➤ Features

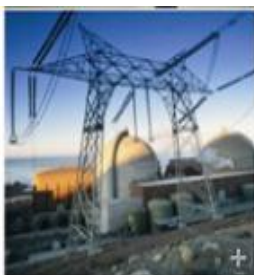
- Supply power to HD network surveillance cameras with Cat5e (PoE)
- 8x 10/100/1000M RJ45 ports; 1x AC input port; 4x PoE Ports
- AC input: 90V~264V
- Compatible with IEEE 802.3af standard
- Coming with the Ethernet network port and PoE output port, and the power input port with lightning-proof function (meet the secondary lightning protection)
- Can supply power with the spare line pair(4/5 (+), 7/8 (-) method or the data line pair 1/2(+), 3/6(-) method
- No fan, natural heat dissipation, small, quiet design, suitable for desktop or wall



#### ➤ Introduction

PoE Injector is also called as Power over Ethernet mid-span devices. 4-Port PoE injector, that is PoE power supply module, is the most flexible and the hottest products among the power supply devices. There are 4x RJ45 PoE ports for these 4-Port PoE injectors. This mid-span have 4x2 Standard RJ45 network ports, one group of network ports will use for upper Ethernet switches or other network devices, another group of network ports will support POE power supply output with network data output.

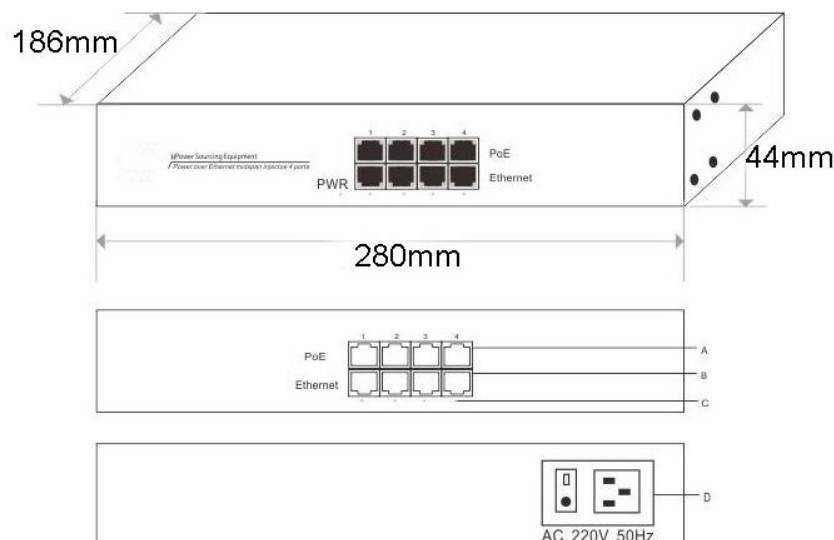
These 4-Port PoE injectors provide a simple, economical, high-performance and intelligent way for Ethernet PoE power supply and data communication. It's ideal choice for those who need the superior quality project because of its simple use, easy to install, superior performance and cost-effective. They can supply power to HD webcam through Cat5 Ethernet cable, in order that make it more flexible for the places difficult to connect to power supply, and provide with more efficient solutions.



## ➤ Specification

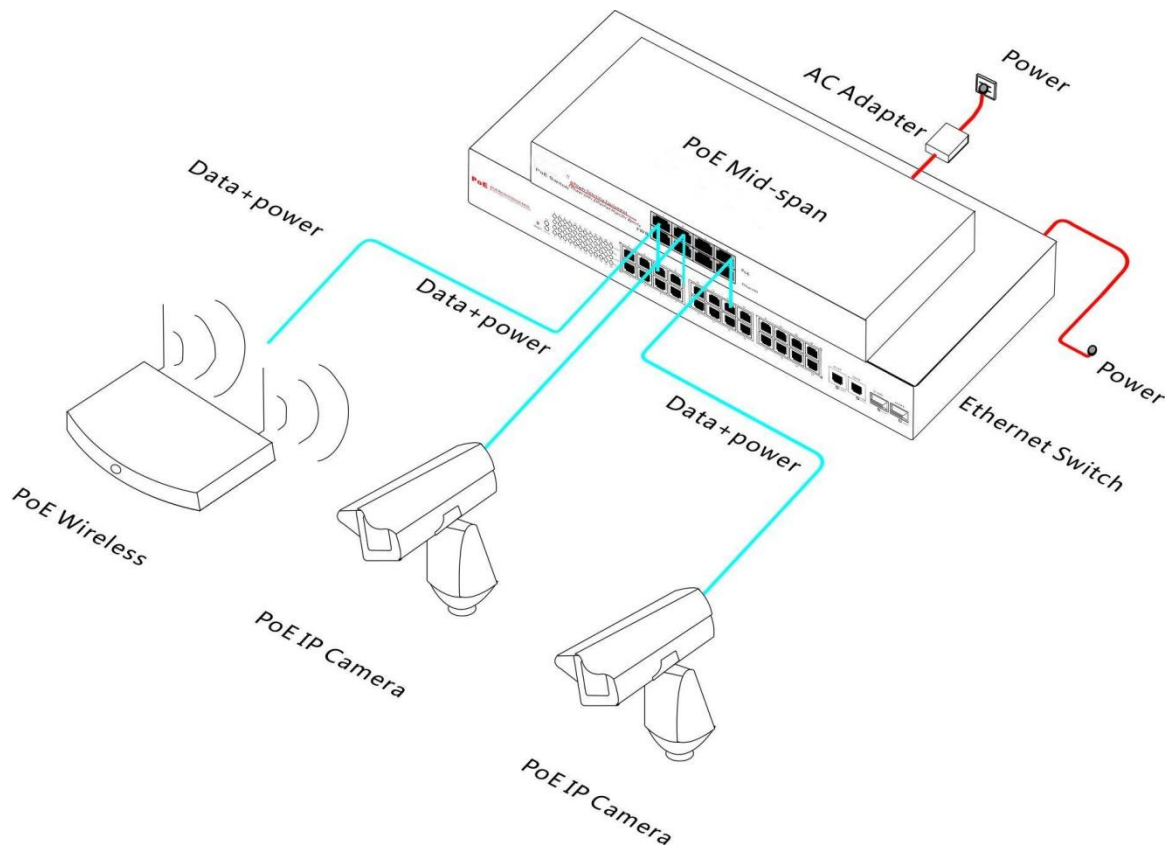
Description	4-Port Gigabit PoE Injector with 4 PoE Ports 15.4W 8x 10/100/1000M copper cable RJ45 ports, 1x AC input port, 4x PoE ports
PoE Power Supply	mid-span: 4/5, 7/8 data line pair(default); end-span: 1/2,3/6 spare line pair (can be customized)
Network Medium	100BASE-TX: 5Cat and more UTP (≤100 meters) 1000BASE-TX: 5Cat and more UTP (≤100 meters)
Performance	Working Rate:10/100/1000Mbps Network port protection: meet with IEC61000-4-2(ESD) MTBF: 190,000 hours(about 21 years)
PoE Standards	IEEE 802.3af
LEDs Indicator	PoE working status
Power	Total power: 60W(IEEE802.3af) PoE port power: 15.4W(IEEE802.3af) AC input voltage: 90~264V
Dimensions	LxWxH: 280x186x44(mm)
Weight	1kg
Working Environment	Operating Temperature: 0 °~ 55 °C Storage Temperature: -20 °~ 75 °C Working Humidity: 10% ~90%, non-condensing Storage Humidity: 10% ~95%, non-condensing
Warranty	CE mark,commercial,FCC Part 15 Class B, RoHS 1 year warranty

## ➤ Dimension



- A. RJ45 PoE Output    B. Ethernet RJ45 Input  
C. PoE Status Light    D. AC 220V/50Hz Input

## ➤ Application



## ➤ Ordering Information

Model NO.	Description
PE104	10/100M PoE injector, 8x RJ45 ports, 4x PoE ports, IEEE802.3af, 15.4W
PE104-at	10/100M PoE injector, 8x RJ45 ports, 4x PoE ports, IEEE802.3at, 25.5W
PE104G	10/100/1000M PoE injector, 8x RJ45 ports, 4x PoE ports,, IEEE802.3af, 15.4W
PE104G-at	10/100/1000M PoE injector, 8x RJ45 ports, 4x PoE ports,, IEEE802.3at, 25.5W

## ➤ Packing List

- 4-Port Gigabit PoE Injector with 4 PoE Ports 15.4W
- User manual × 1
- Power Cable
- Warranty card × 1