



◆ 9-Port PoE Switch with 8 PoE Ports

➤ Features

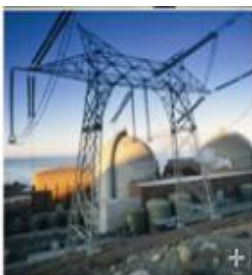
- Can supply power to network surveillance cameras that without PoE function
- 9x 10/100Mbps auto-sensing RJ45 ports, 8x 10/100Mbps PoE ports, 1x uplink port
- Supports port auto-flip (Auto MDI/ MDIX)
- External power supply
- Maximum power of single PoE port: 15.4W/af,25.5W/at
- Adopts store-and-forward architecture
- IEEE 802.3af/at power on up to 8 ports
- Features with fanless, natural cooling, small, compact and quiet design, suitable for desktop or wall
- Built-in 1U rack power supply series, easy to place it into standard mounting brackets



➤ Introduction

The PoE Switch ES3009-8P provides power and data from a single point, using Power over Ethernet (PoE) over a single Cat-5 cable. The nine Fast Ethernet ports can be used for any 10/100 Mbps link and 8 port can supply industry-standard IEEE 802.3af/at power. Advanced auto-sensing algorithm gives power only to IEEE802.3af/at end devices, so no need to worry about damaging proprietary PoE or non-PoE equipment. In addition, it discontinues the power when PoE devices are disconnected. Easy and reliable, the PoE Switch ES3009-8P automatically determines PoE requirements, speed, duplex, and cable type using Auto Uplink™.

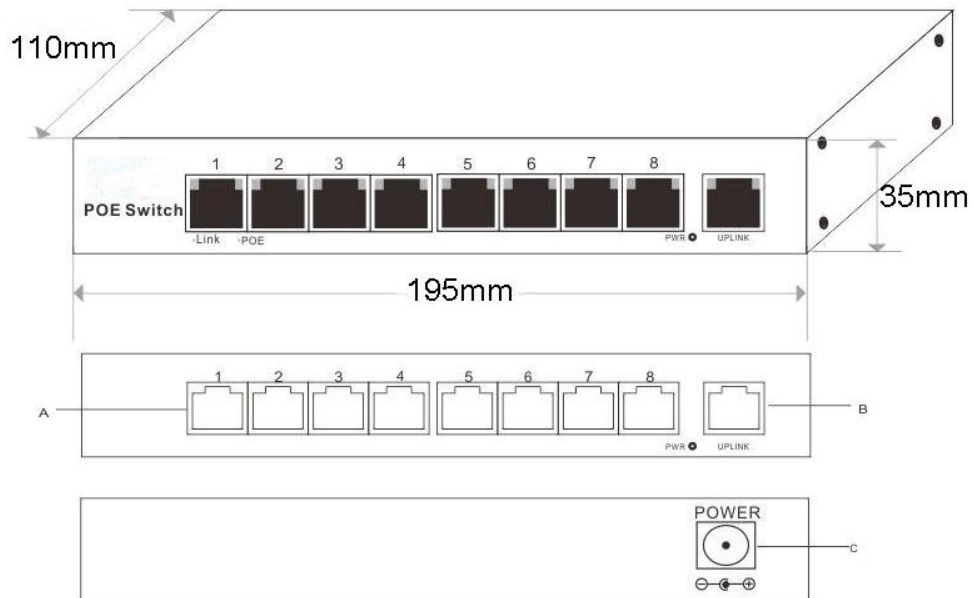
The affordably priced PoE Switch ES3009-8P delivers PoE to any small business network that wants to simplify the installation of wireless access points and IP-based surveillance cameras. These devices are optimally installed on a ceiling or high on a wall, away from most electrical outlets. PoE eliminates the requirement for a dedicated electrical outlet to power these devices. This allows for flexibility in situating devices where AC power is difficult to access and lowers installation costs. Compact and flexible, the PoE Switch ES3009-8P is ideal for small business networks that need to inexpensively use PoE to deploy wireless access points and IP-based network surveillance cameras.



➤ Specification

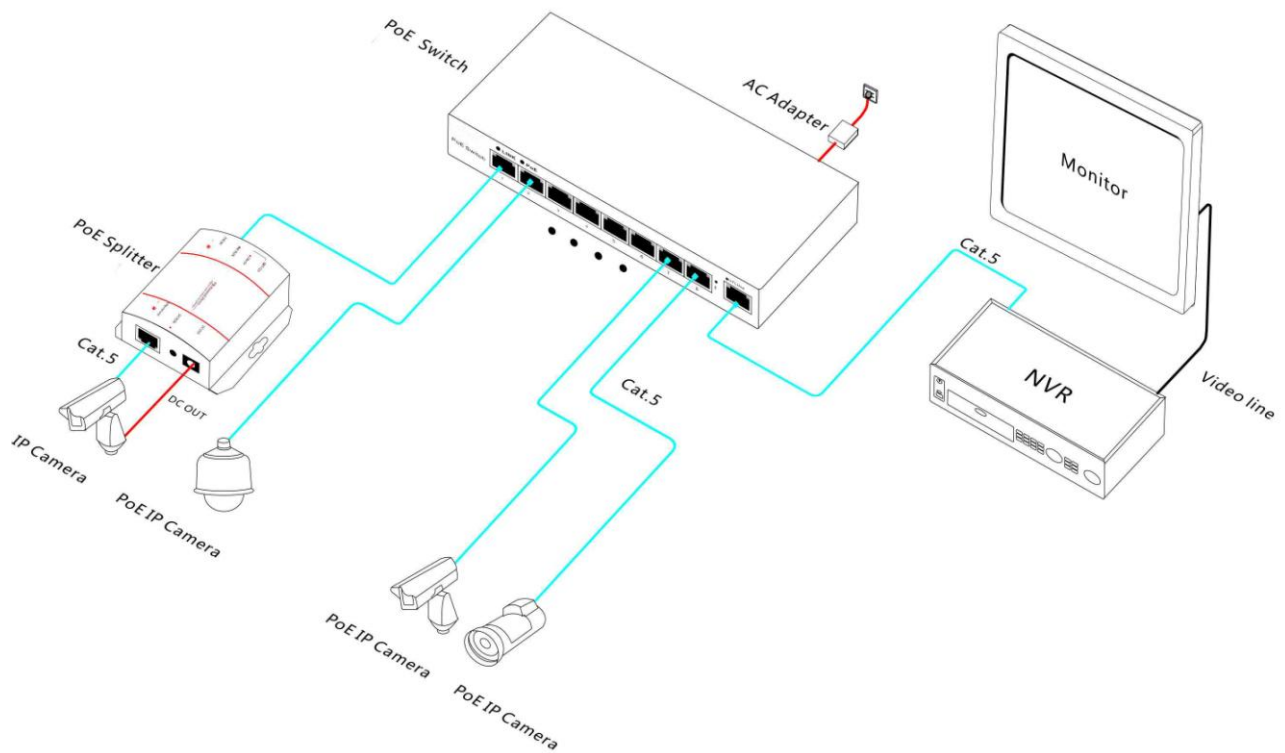
Description	9-Port PoE Switch with 8 PoE Ports
Connector	9x 10/100M copper cable RJ45 ports(all ports support MDI/MDIX) 8x PoE ports, 1x uplink port
Transfer Mode	Store-And-Forward
Network Medium	10BASE-T: Cat3,4,5 UTP(≤100 meter) 100BASE-TX: Cat5 or more UTP (≤100 meter) Data transmission distance: 100m
Performance	Bandwidth: 1.6Gbps (non-blocking) Network Latency (100 to 100M bps): maximum delay less than 20 microseconds Packet Buffer Memory: 96KB Address Database Size: 1,000 MTBF: 190,000 hours (about 21 years)
Standards	IEEE 802.3i 10BASET IEEE 802.3u 100BASETX IEEE 802.3x Flow Control IEEE 802.1af DTE Power via MDI IEEE 802.3af IEEE 802.3at
LEDs Status	System: power supply Every Port: connecting, PoE working status
Power	PoE port power:15.4 W(1~8 port)/af, 25.5W/at Power input: AC100-240V 50/60Hz; DC48V
Dimensions	195x110x35mm
Weight	0.5kg
Environment	Operating Temperature: 0 °~ 55 °C Storage Temperature: -20 °~ 75 °C Operating Humidity: 10% ~ 95%, non-condensing
Radiation	CE mark, commercial FCC Part 15 Class B VCCI Class B EN 55022 (CISPR 22), Class B
Safety	CE Mark ,commercial CE/LVD EN60950, RoHS
Warranty	1 year warranty(2 yeas warranty for power adapter)

➤ Dimension



- A. 8x PoE Power Port
- B. Uplink Port
- C. DC 48V Input

➤ Application



➤ Ordering Information

Model NO.	Description
ES3009-8P-af	9-Port PoE Switch with 8 PoE Ports,48V DC ,15.4W
ES3009-8P -at	9-Port PoE Switch with 8 PoE Ports,48V DC, 25.5W

➤ Packing List

- 9-Port PoE Switch with 8 PoE Ports
- Power Adapter × 1
- User manual × 1
- Warranty card × 1