



◆ 5-Port 100M PoE Switch with 4 PoE Ports - Built-in Power

➤ Features

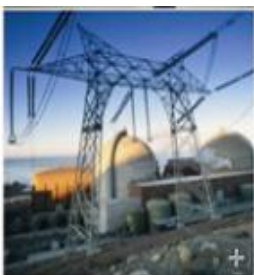
- 5-Port 100M PoE Switch with 4 PoE Ports and 1 Uplink Port
- Built-in power supply
- Supply power to 5 classes Ethernet wireless access point (AP) and IP surveillance cameras
- Port 1 to port 4 is compatible with IEEE802.3af/at standard power
- 5x 10/100 Mbps automatic adjustment RJ45 ports
- Compatible with IEEE 802.3 10Base-T and IEEE 802.3u 100Base-TX standard
- Flow Control Type: Full duplex adopts IEEE 802.3x standard, half duplex adopts back pressure standard
- Auto-flip ports(Auto MDI/MDIX)
- The uplink port has lightning-proof function(Port 5 meets the secondary lightning protection)
- Each port maximum power is 15.4W/af,25.5W/at
- Store-and-forward architecture
- All ports support wire-speed switching, frame size within the range of 64 to 1536 can achieve wire-speed
- No fans, natural cooling, small and exquisite, no noise design, suitable for desktop or wall



➤ Introduction

This ES3005-4P-I switch provides a network point for power supply and data transmission. All the 5 Ethernet ports can be connected with 10/100Mbps quickly, and the uplink port is Ethernet interface, among which 1-4 port can provide standard IEEE 802.3af /at power supply. Due the advanced self-sensing algorithm supply power for IEEE802af/at terminal unit only, there is no need to worry about damaging proprietary PoE or non-PoE standard equipment. In addition, it will stop power supply when PoE devices are not connected.

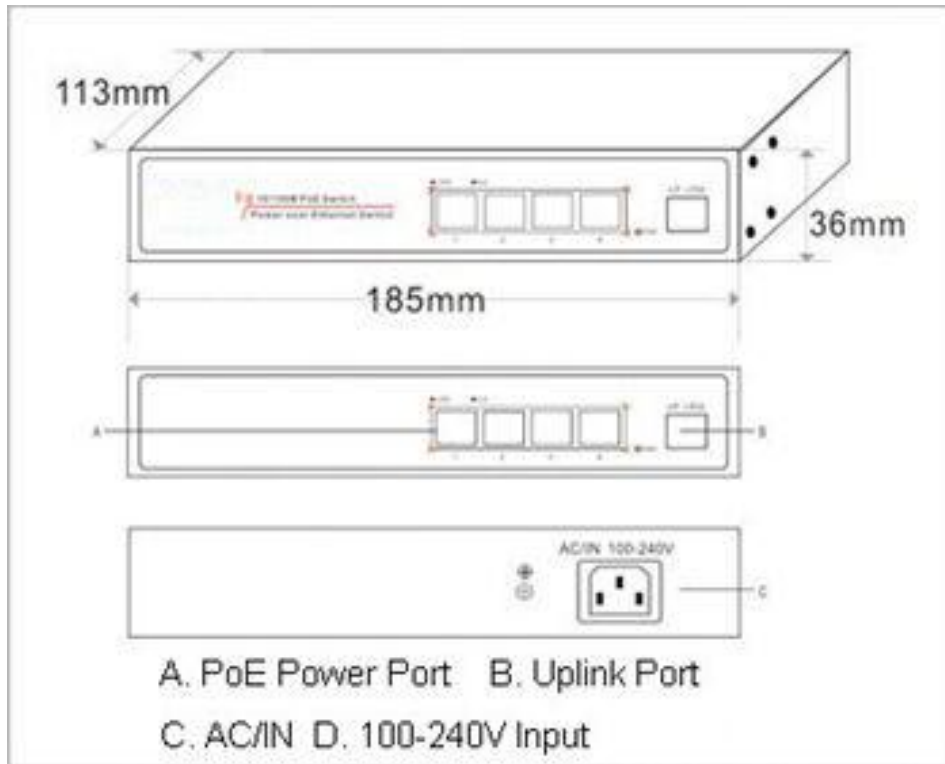
This cost-effective ES3005-4P-I provide network layout need to simplify wireless access point (AP) and IP-based surveillance cameras network cameras in order to install in commercial network and home network. The devices far away from power socket are very suitable for hanging on the wall or ceiling. PoE eliminates the need for connecting these devices to power socket. So it make more flexible for those difficult to connect with AC power socket, and cut down the installation cost. It is ideal choice for those want to deploy a small commercial network and home network that use wireless access point (AP) and IP-based surveillance cameras.



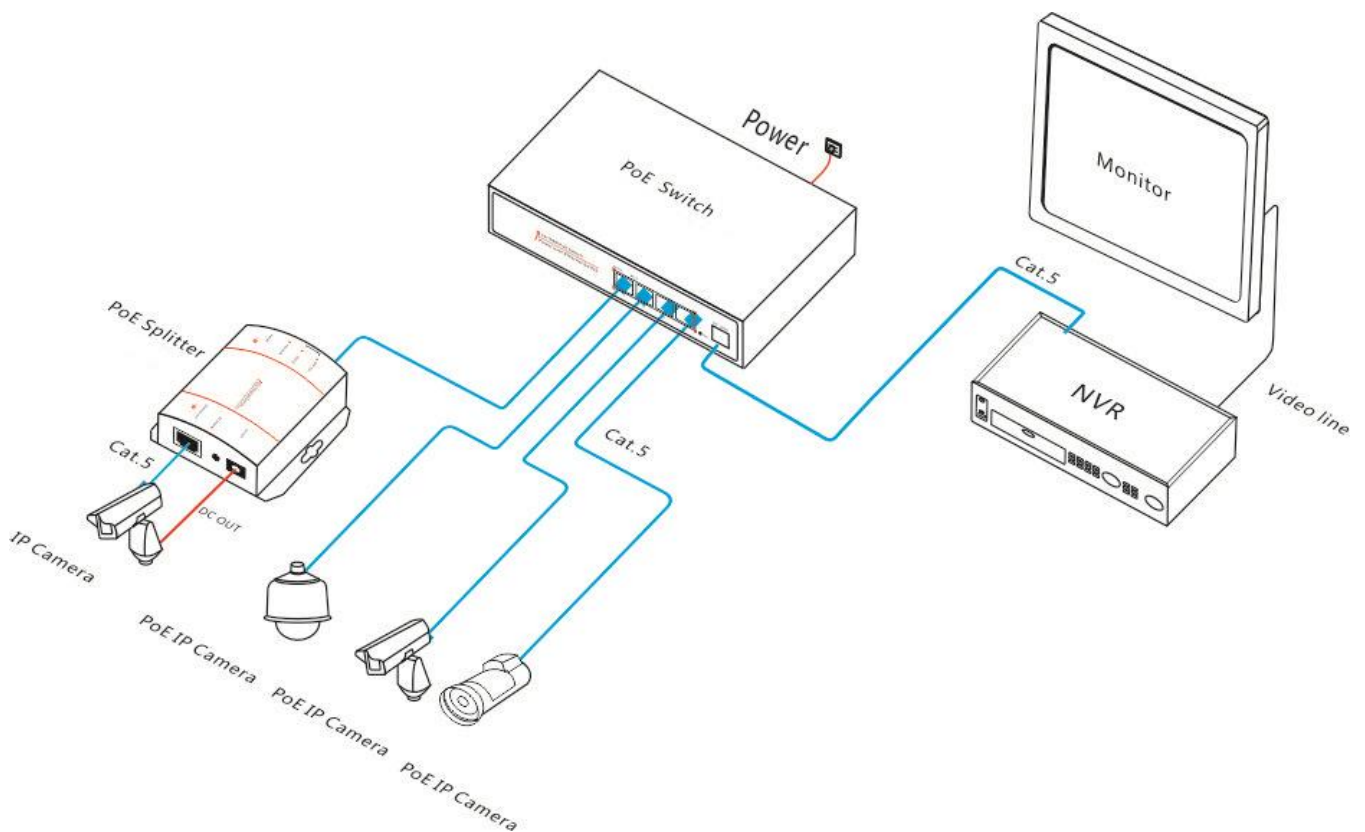
➤ Specification

Description	5-Port 100M PoE Switch with 4 PoE Ports, Built-in Power Supply
Connector	5x 10/100M RJ45 ports, 4x PoE ports
Transfer Mode	Store-And-Forward
Network Medium	Cat5 or more UTP (≤150 meters) MAC Address Table: 1K Data transmission distance: 100m
Bandwidth	Bandwidth: 1.6Gbps (non-blocking)
Standards	IEEE 802.3i 10BASET IEEE 802.3u 100BASETX IEEE 802.3x Flow Control IEEE 802.1af DTE Power via MDI IEEE 802.3af IEEE 802.3at
Power	PoE port power: 15.4 W(1~4 port)/af, 25.5W/at Power input: AC100-240V 50/60Hz;
Dimensions	185x113x36mm
Weight	0.6kg
Environment	Operating Temperature: 0 °~ 55 °C Storage Temperature: -20 °~ 75 °C Operating Humidity: 10% ~ 95%, non-condensing
Radiation	CE mark, commercial FCC Part 15 Class B VCCI Class B EN 55022 (CISPR 22), Class B
Safety	CE Mark ,commercial CE/LVD EN60950, RoHS
Warranty	1 year warranty

➤ Dimension



➤ Application



➤ Ordering Information

Model NO.	Description
ES3005-4P-I-af	5-Port PoE Switch with 4 PoE Ports, Built-in Power Supply, 15.4W
ES3005-4P-I-at	5-Port PoE Switch with 4 PoE Ports, Built-in Power Supply, 25.5W

➤ Packing List

- 5-Port PoE Switch with 4 PoE Ports , Built-in Power Supply
- Power Cable × 1
- User manual × 1
- Warranty card × 1